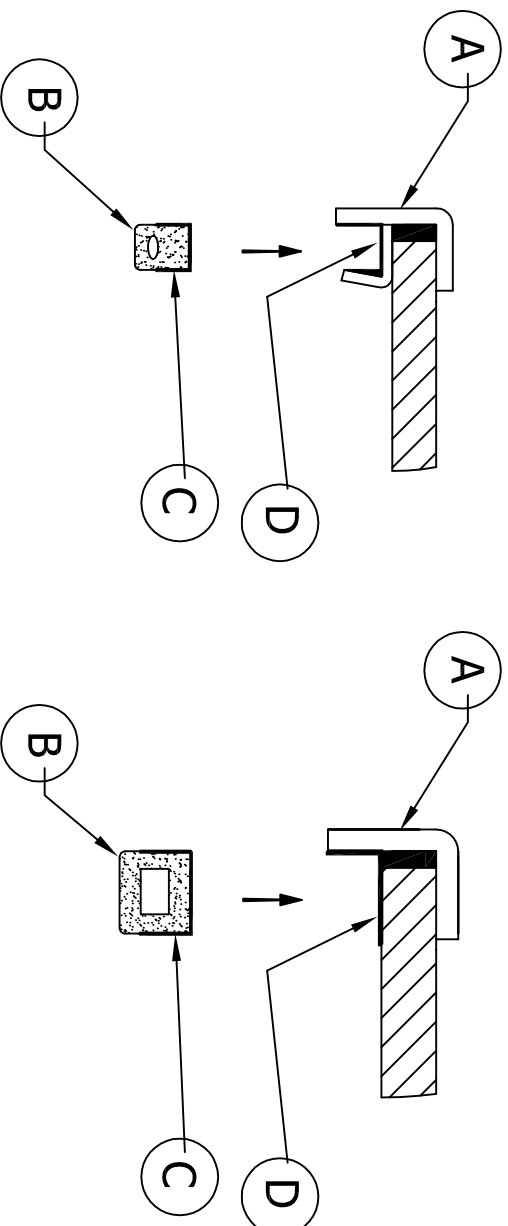


REPLACE GASKET OF PORTLIGHTS LS/LS0/LSR/L0/LR



1. To clean gasket (B) with cloth.
2. Move silicone out from place (D) on Frame (A) and use cleanser, then fill proper silicone.
(A) and use cleanser, then fill proper silicone.
3. Glue gasket (B) to place (D) on Frame (A) and press properly. Keep it two days more for adhesion entirely.